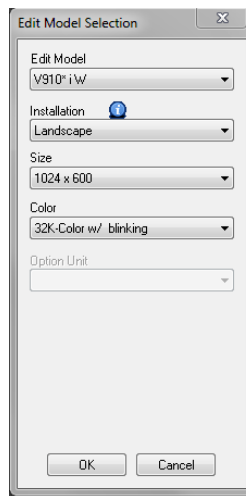


TECHNICAL INFORMATION	TI-HMI-0003v100EN
Establish communication between a Monitouch HMI and a S7-1200/1500 PLC	

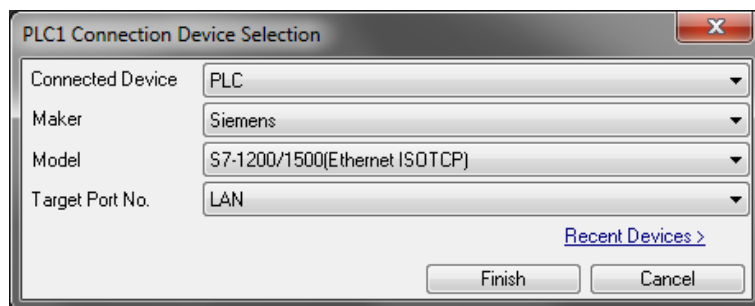
Type	HMI
Software version	All versions
Required options	Not required
Use	Fuji technical staff
Date	01/03/2016
Version	1.0.0
Author	XXXXXXXXXX
Revised	XXXXXXXXXX
Approved	XXXXXXXXXX
Languages	English

This document describes how to establish communication between a Monitouch HMI and a S7-1200/1500 PLC.

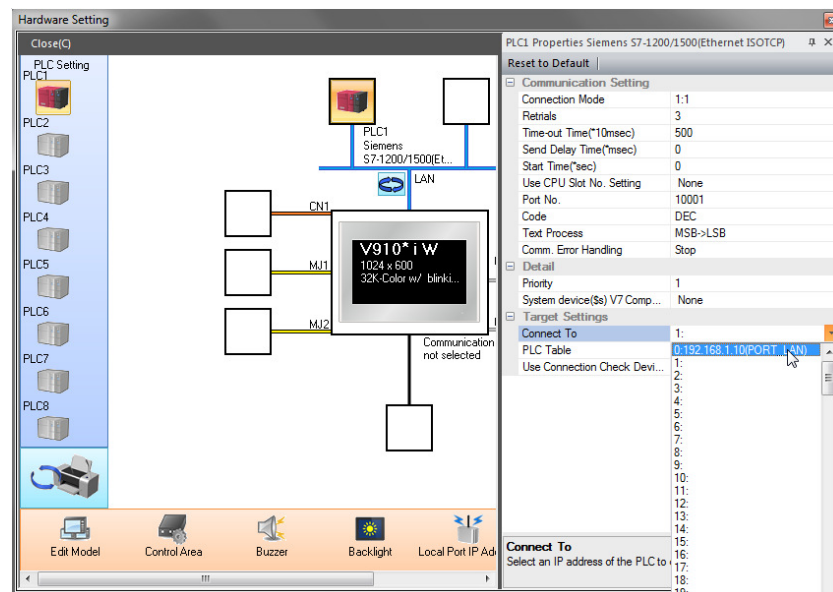
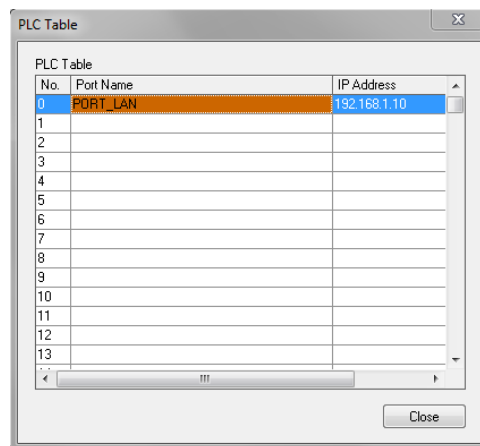
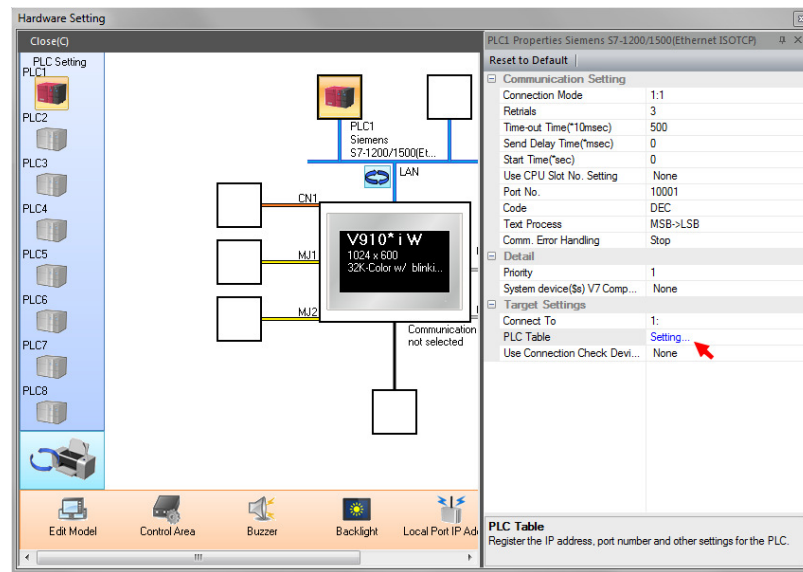
- 1- Open V-SFT 6 Software and select the desired model and click [OK].



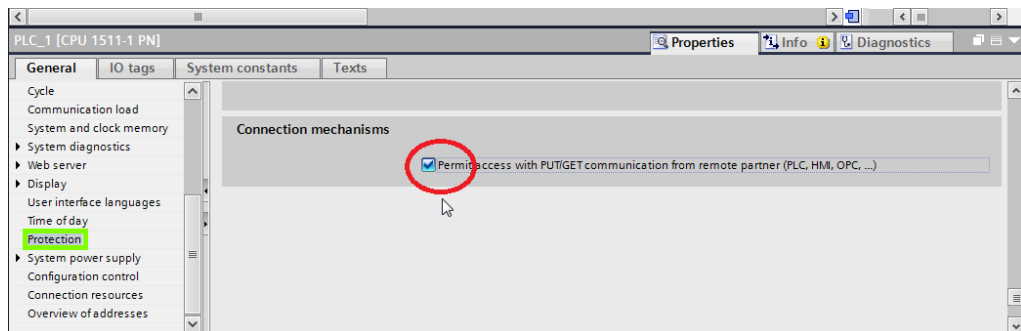
- 2- In the Device selection window, select SIEMENS and S7-1200/1500 Ethernet ISO TCP, then click [Finish].



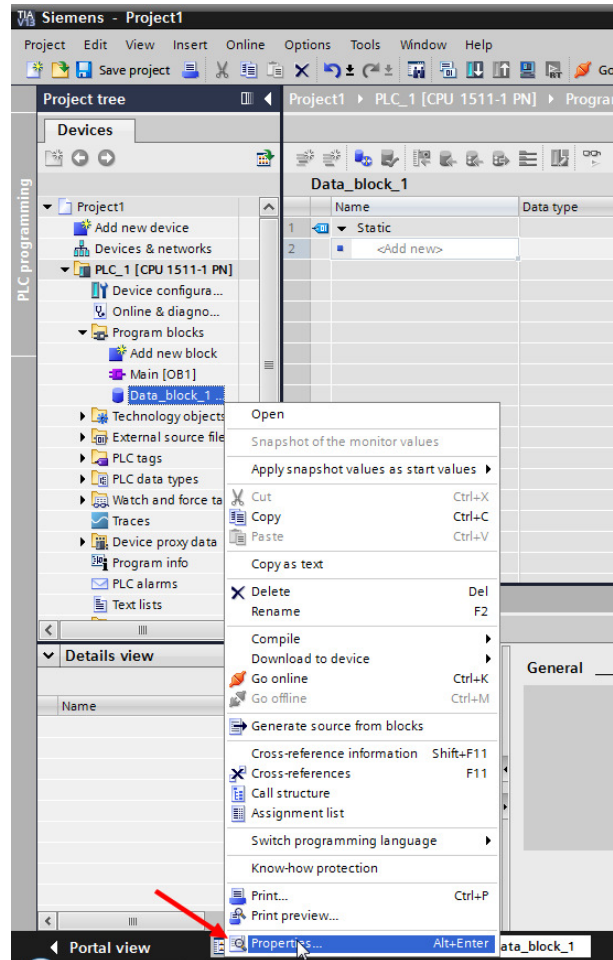
- 3- Insert in the “PLC Table”, the IP address of the S7-1200/1500 unit.
Then select the number you have configured on the “Plc Table” at the “Connect To” setting.



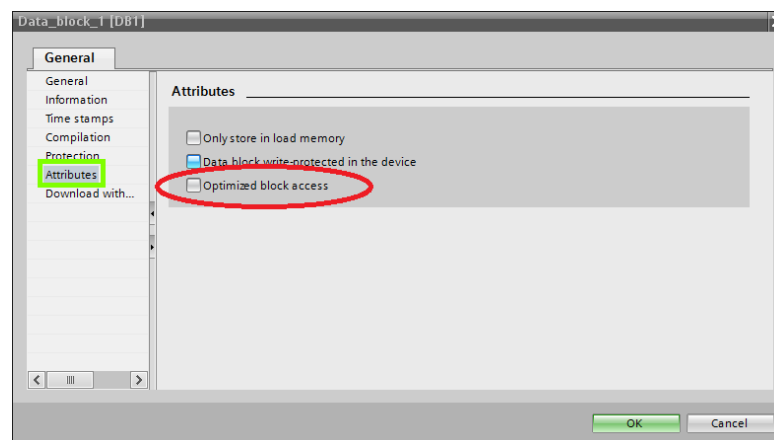
- 4- Finally enable the PUT/GET communication acces in the CPU properties at TIA PORTAL software.



- 5- It is possible to import all the tags from the SIEMENS TIA Portal, with the tag import tool.
Prepare the DBs on TIA PORTAL before Tag import.
Please note that before importing, all Data Blocks must have “optimized block access” option unselected.
So please check if any of the DBs has “optimized block access” selected and change it, if necessary.

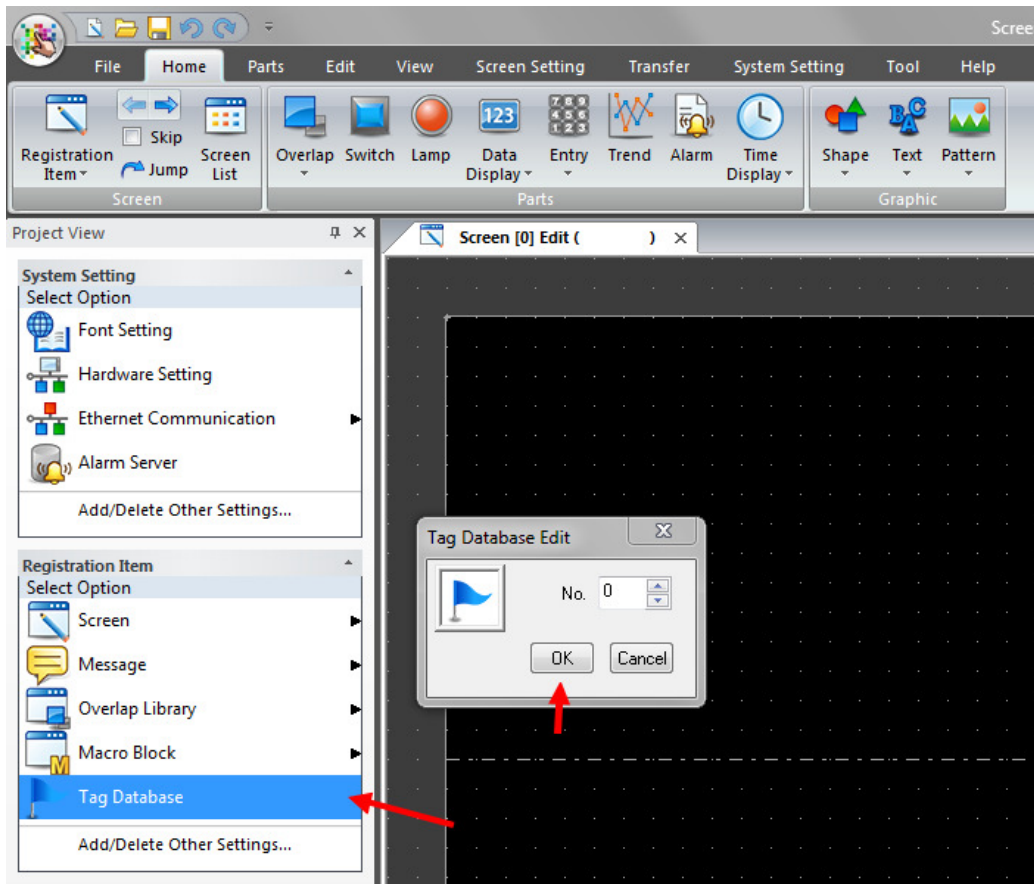


Right click over DB and select “Properties”.



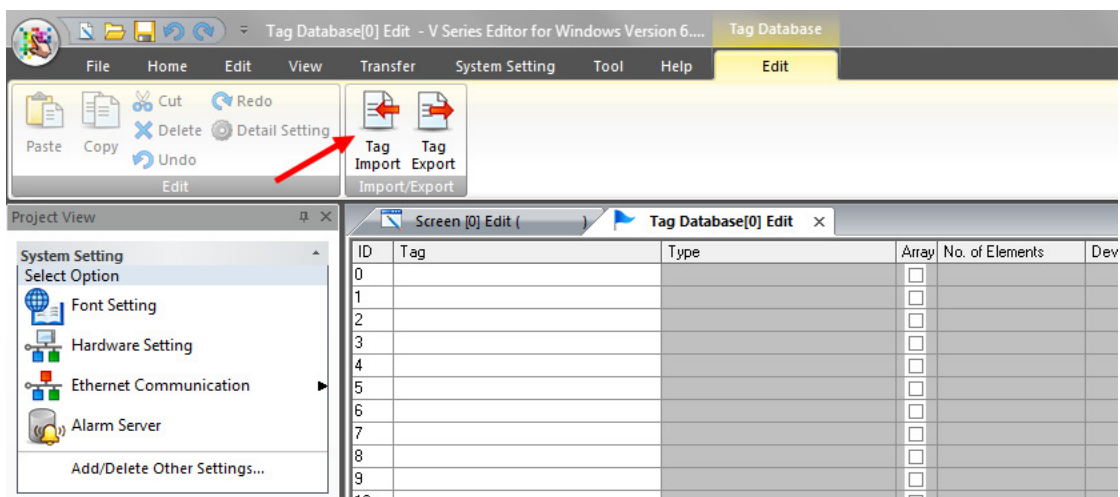
Uncheck the “optimized block access” option and then compile the project

6- Open a TAG DATABASE table in the V-SFT software.

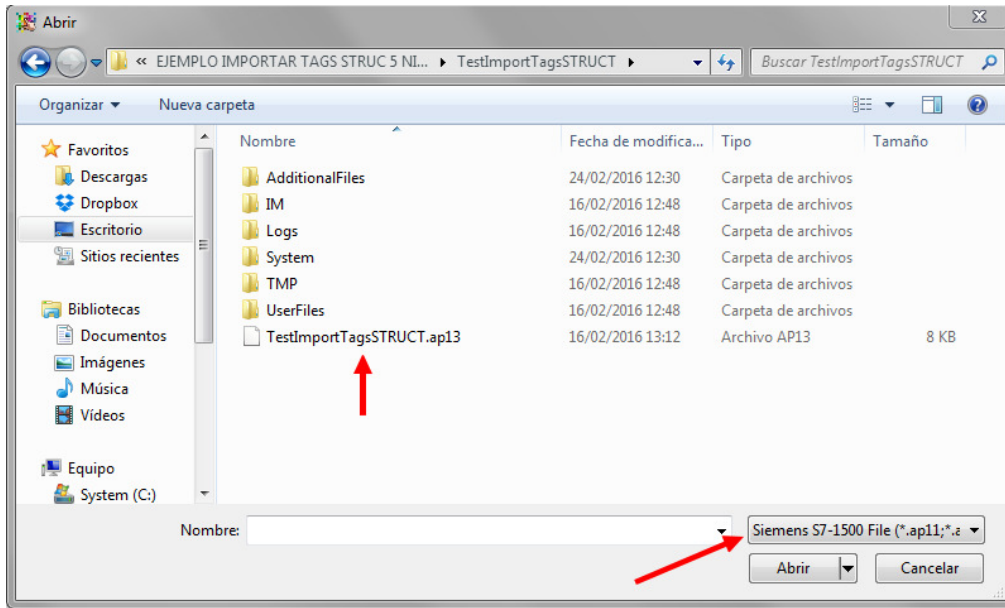


Click Tag Database and then click [OK]

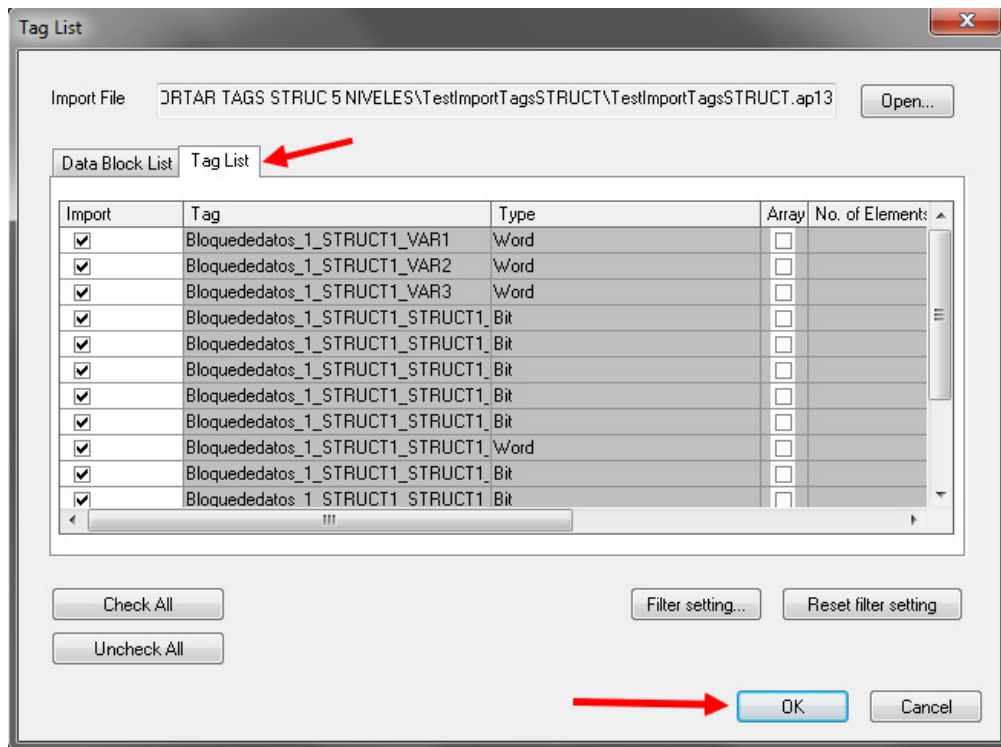
7- When TAG DATABASE is opened it is possible to click the [Tag Import] icon, placed in the upper ribbon menu called "Edit", to start the importing of the tags.



Click [Tag Import] icon



Select the TIA PORTAL file.



Check the tag list and click [OK]

8- All the tags are imported into V-SFT software, and they are ready to be used.

ID	Tag	Type	Array	No. of Elements	Device
0	Bloquededatos_1_STRUCT1_VAR1	Word	<input type="checkbox"/>		DB0001:0000
1	Bloquededatos_1_STRUCT1_VAR2	Word	<input type="checkbox"/>		DB0001:0002
2	Bloquededatos_1_STRUCT1_VAR3	Word	<input type="checkbox"/>		DB0001:0004
3	Bloquededatos_1_STRUCT1_STRUCT1	Bit	<input type="checkbox"/>		DB0001:0006.0
4	Bloquededatos_1_STRUCT1_STRUCT1	Bit	<input type="checkbox"/>		DB0001:0006.1
5	Bloquededatos_1_STRUCT1_STRUCT1	Bit	<input type="checkbox"/>		DB0001:0006.2
6	Bloquededatos_1_STRUCT1_STRUCT1	Bit	<input type="checkbox"/>		DB0001:0008.0
7	Bloquededatos_1_STRUCT1_STRUCT1	Bit	<input type="checkbox"/>		DB0001:0008.1
8	Bloquededatos_1_STRUCT1_STRUCT1	Word	<input type="checkbox"/>		DB0001:0010
9	Bloquededatos_1_STRUCT1_STRUCT1	Bit	<input type="checkbox"/>		DB0001:0012.0
10	Bloquededatos_1_STRUCT1_STRUCT1	Bit	<input type="checkbox"/>		DB0001:0012.1
11	Bloquededatos_1_STRUCT1_STRUCT1	Word	<input type="checkbox"/>		DB0001:0014
12	Bloquededatos_1_STRUCT1_STRUCT1	Bit	<input type="checkbox"/>		DB0001:0016.0
13	Bloquededatos_1_STRUCT1_STRUCT1	Bit	<input type="checkbox"/>		DB0001:0016.1
14	Bloquededatos_1_STRUCT1_STRUCT1	Word	<input type="checkbox"/>		DB0001:0018
15			<input type="checkbox"/>		

Document history.

Version	Changes applied	Date	Written	Revised	Approved